

An abstract graphic on the left side of the page, divided by a diagonal line from the top-left to the bottom-right. The top-left triangle is dark purple with a white dot and a thin white line extending from it. The middle-left section features a grey semi-circle, concentric blue circles, and a pink diagonal line pattern. The bottom-left section contains a pink square with a white line pattern, a grey triangle, and a dark purple triangle. The right side of the page is a solid blue background with the text.

WQG FUN WITH FABRIC 2026



AGENDA

Business Meeting

Survey/Shop Charity Project Kits

Program

- FWF Challenges

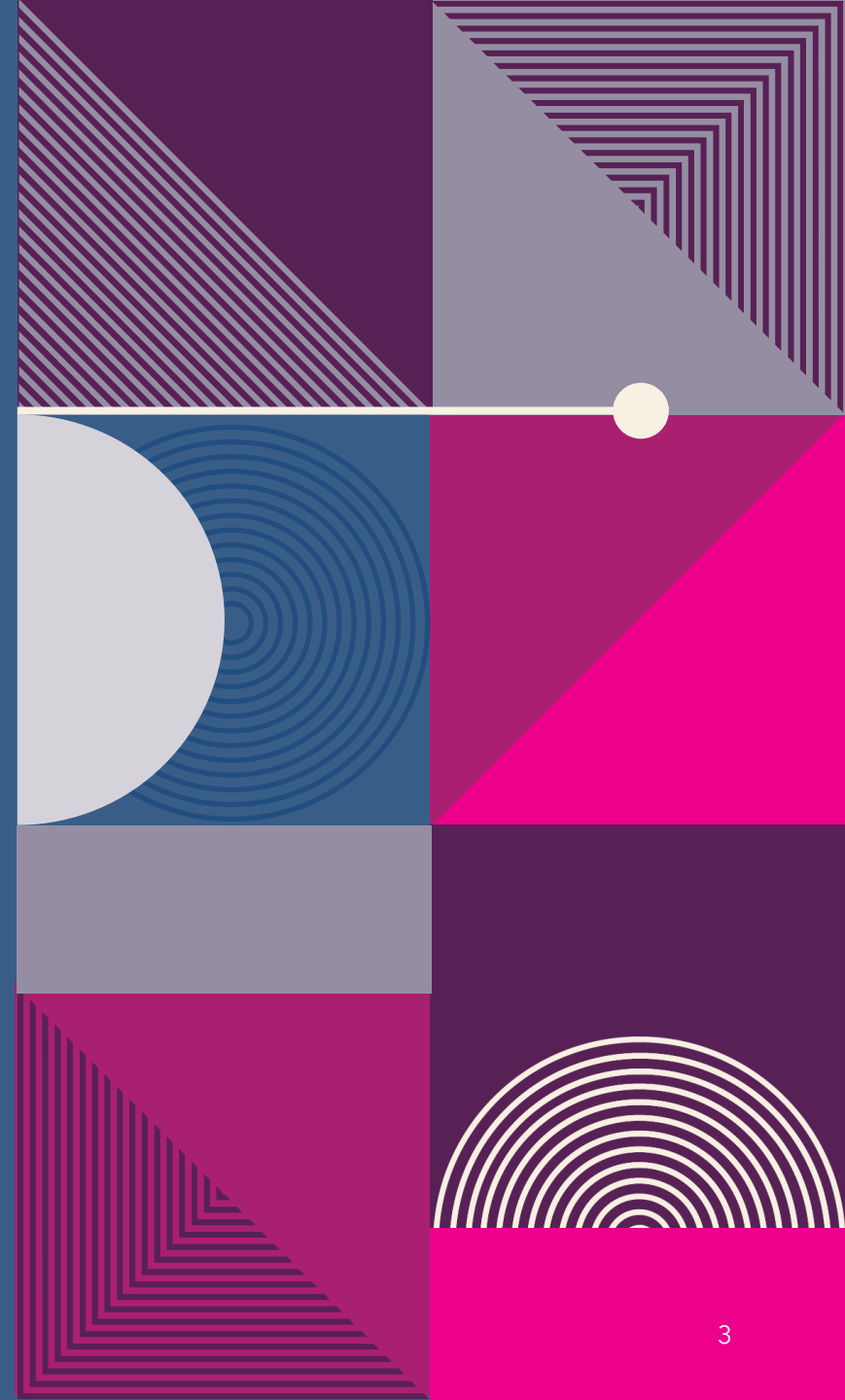
- America 250 Block of the Month Sampler

- FWF Charity Projects

Show and Tell

Raffle Basket

BUSINESS MEETING





SURVEY

2026 WQG CHALLENGES

OHIO STAR

Ohio Quilts!, a statewide quilt guild, issued a challenge for Ohio Star quilts. Quilts can be any size but must include at least one Ohio Star Block.

Quilts due at September meeting.

TEMPERATURE QUILT

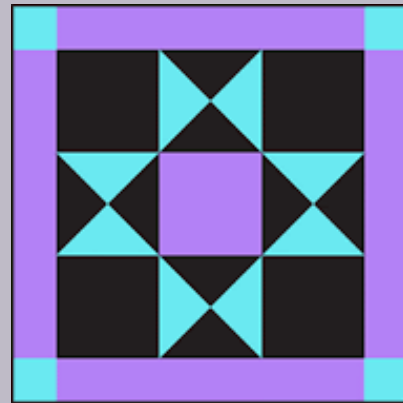
A temperature quilt uses quilt blocks over the course of a year (or however long you want) to track the high and low temperatures of each day in a given location.

Quilts due at February 2027 meeting.

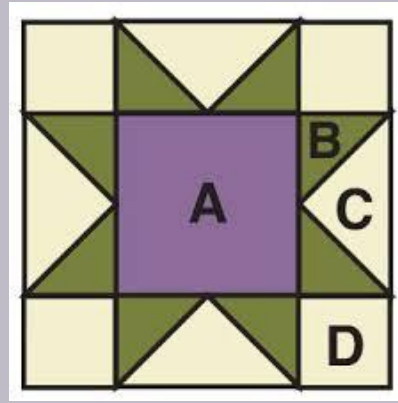
OHIO STAR

This challenge is all about the Ohio Star block. The Ohio Star block is rich in history and has been around since the early 1800's. Like a lot of blocks, it's known by a few other names - Variable Star, Eastern Star and Western Star, depending on it's geographical location or time period.

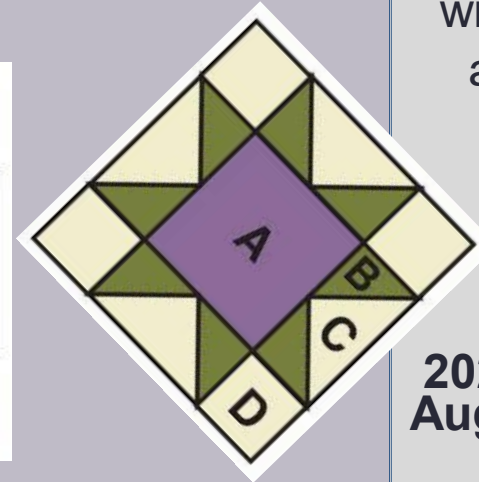
Your challenge is to design a quilt or quilted object using at least one Ohio Star block. There are no restrictions on size.



Ohio Star



Sawtooth Star



OHIO QUILTS SPRING RETREAT 2026

**Comfort Suites Berlin
Hotel and Conference
Center**

**4810 Township Road
366, Berlin, Ohio**

Four days, three nights!
Check-in April 10; check
out Monday April 13.
Spacious sewing room
with access all day from
arrival Friday through
Monday at 3 p.m.

Ohio Quilts!

**2026 Summer Retreat
August 23-26, 2026**

www.ohioquilts.org



OHIO STAR RESOURCES

[Ohio Star Quilts - New Quilts from an Old Favorite](#), ed. Victoria Faoro, 1996, AQS.

<https://patchanddot.com/free-pattern/ohio-star-quilt-block-tutorial/> - good tutorial on making an ohio star block

https://www.missouriquiltco.com/blogs/missouri-star-quilting-tutorials/ohio-star-quilt?srsltid=AfmBOopYfRd21IADve0YyvSID5Hc_jre5_ATTEF8ndJDjTwHBVTgbUgq - Jenny demonstrates how to make the classic Ohio Star block pattern using yardage and charm packs

<https://suzyquilts.com/everything-need-know-ohio-star-quilt-pattern/?srsltid=AfmBOopnQ09TIOb4IbZwWIByyz3-dZRP6Y8e03fWf8yPengwxtmd8IAM> - good article with some clever quilt ideas and links to video tutorials

TEMPERATURE QUILTS

Temperature quilts are MYSTERIOUS

Temperature quilts are SPONTANEOUS



TEMPERATURE QUILTS ARE HIP

Temperature quilts are SEMI-CONTROLLED

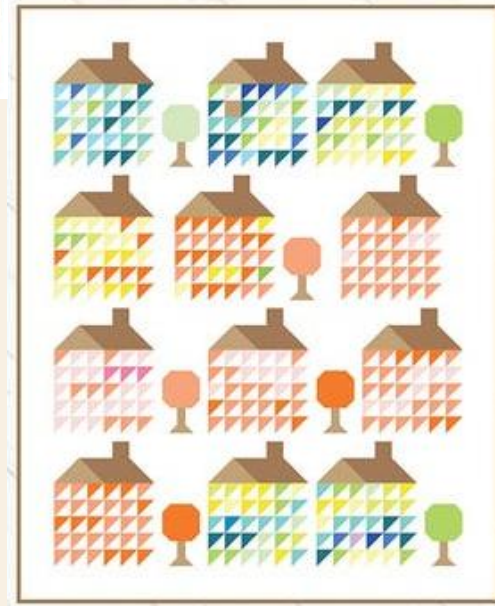
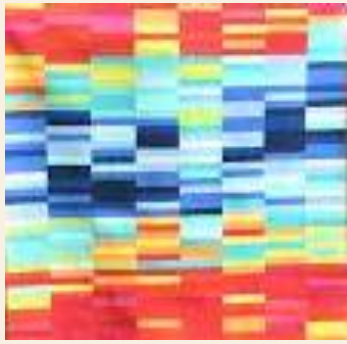


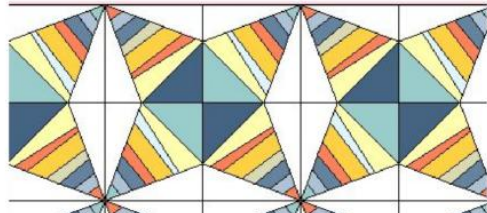
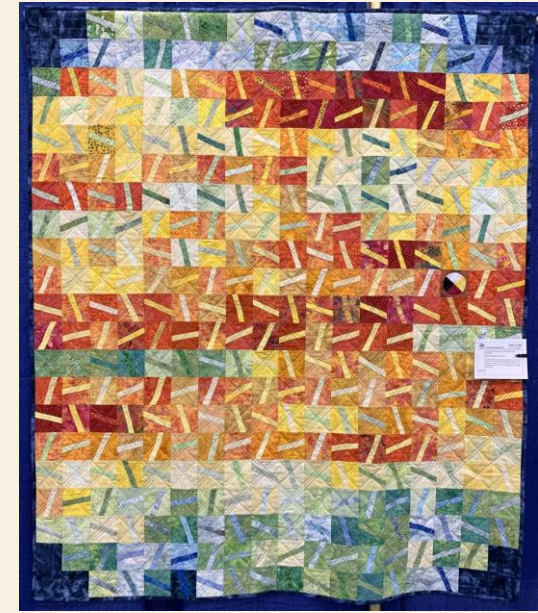
TEMPERATURE QUILTS

Temperature quilts are a relatively new phenomena in the world of quilting. First appearing in the 2000's, Temperature Quilts can be found in a myriad of patterns.

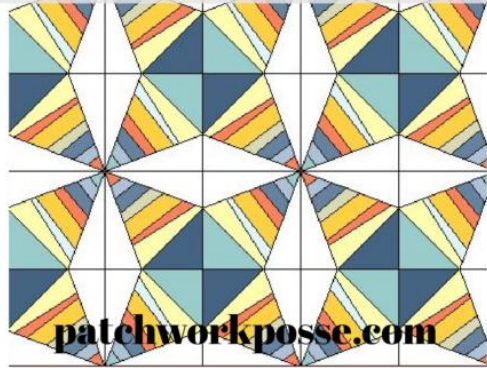
At it's simplest, a Temperature Quilt records high and/or low data for a specific geographical location. Typically, Temperature Quilts cover a time frame of one year .

TEMPERATURE QUILT INSPIRATION





**Rocky Weather
Temperature Quilt
Pattern**



patchworkposse.com



PLANNING YOUR TEMPERATURE QUILT

There are numerous websites with tracking sheets to assist in your temperature quilt planning. Moda and Bernina both have blog space dedicated to temperature quilts along with tracking sheets.

BERNINA Temperature Quilt Along 2025

Stoffmuster	Stoffname	Temp. Bereich
	Charcoal	-23 -21
	Boboat	-20 -18
	Midwest	-14 -15
	Wilder	-13 -12
	Celestial	-11 -9
	Kaas	-7 -6
	Robin Gy	-5 -3
	Iron	-2 0
	Snow	+1 +3
	Goldenes	+4 +6
	Champere	+7 +9
	Lime	+10 +12
	Indigo	+13 +15
	Peak	+16 +18
	Coal	+19 +21
	Benjamine	+22 +24
	Carrot	+25 +27
	Tomato	+28 +30
	Sagegy	+31 +33
	Crinson	+34 +36

Temperatur Quilt Planner

Ein Temperatur Quilt stellt die Höchst- und Tiefstwerte für einen Ort in Laufe eines Jahres dar. Wählt zuerst ein Land, bzw einen Ort aus, den Ihr für Euren Temperature Quilt verwenden möchtet. Die für den BERNINA Temperature Quilt Along festgelegten Temperaturen liegen zwischen -23°C und +36°C. Wir arbeiten in diesem Quilt Along mit 20 Stoffen und 20 Einteilungen für die Temperaturen. Diese Werte bilden den Temperaturbereich, der in Eurem Temperature Quilt vernäht wird.

Schneidet von Euren Stoffen jeweils ein kleines Stück ab und klebt es als Stoffmuster in die linke Spalte des Planers an. Notiert Euch daneben den Namen des Stoffes und in der rechten Spalte die dazugehörigen Temperaturen. Wenn Ihr mit dem ausgewähltem Stoffkit des BERNINA Temp. Quilt Along arbeitet, übertragt Ihr unsere Einteilung ganz einfach.

Eintragung der täglichen Temperaturen: Tragt Tag für Tag die höchste und niedrigste Temperatur in die Skalen ein. Tipp, malt als Hintergrund die Stofffarbe der Temperatur zusätzlich in die Skala ein, das schafft einen guten Überblick, wenn man mit dem Nähen etwas hinterher ist.

BERNINA
made to create

Juli		
Tag	Min.	Max.
1		
2		
3		
4		
5		
6		
7		
8		
9		
10		
11		
12		
13		
14		
15		
16		
17		
18		
19		
20		
21		
22		
23		
24		
25		
26		
27		
28		
29		
30		
31		

August		
Tag	Min.	Max.
1		
2		
3		
4		
5		
6		
7		
8		
9		
10		
11		
12		
13		
14		
15		
16		
17		
18		
19		
20		
21		
22		
23		
24		
25		
26		
27		
28		
29		
30		
31		

September		
Tag	Min.	Max.
1		
2		
3		
4		
5		
6		
7		
8		
9		
10		
11		
12		
13		
14		
15		
16		
17		
18		
19		
20		
21		
22		
23		
24		
25		
26		
27		
28		
29		
30		

Oktober		
Tag	Min.	Max.
1		
2		
3		
4		
5		
6		
7		
8		
9		
10		
11		
12		
13		
14		
15		
16		
17		
18		
19		
20		
21		
22		
23		
24		
25		
26		
27		
28		
29		
30		
31		

November		
Tag	Min.	Max.
1		
2		
3		
4		
5		
6		
7		
8		
9		
10		
11		
12		
13		
14		
15		
16		
17		
18		
19		
20		
21		
22		
23		
24		
25		
26		
27		
28		
29		
30		

Dezember		
Tag	Min.	Max.
1		
2		
3		
4		
5		
6		
7		
8		
9		
10		
11		
12		
13		
14		
15		
16		
17		
18		
19		
20		
21		
22		
23		
24		
25		
26		
27		
28		
29		
30		
31		



TEMPERATURE QUILT CONSIDERATIONS

Things to think about...

- What time frame and location do you want to use?
- Where to find weather data
 - Weather sites like accuweather, weather underground, etc
 - In my experience, these are good sources for data from 2000's forward. I found spotty data for older time frames like the 1980's.
 - NOAA has the best historical data going back over 100 years but the search engine is not the easiest to use
 - Local newspapers for the area of interest may have the required weather data but it might be labor intensive to mine the information.
- How many steps/fabrics do you want in your quilt?
 - A step represents a range of temperatures
 - One way to determine steps is to look at previous years of data to see what the historic temperature range. For instance, Great Bend, KS in 1956 had a temperature range from -7 to 109. Using 20 fabrics, there would be $(116/20)$ about 6 degrees per step. That won't give much variation in color. I would opt to use more fabrics and lessen the degrees per step. 30 fabrics $(116/30)$ would mean each step is about 4 degrees. Using 40 fabrics, each step would represent 3 degrees per step. Most tutorials suggest a range from 2-5 degrees depending on the variation in your temperatures.
 - A minimum of 15-20 fabrics is suggested with most tutorials using 20 fabrics
 - More fabrics means a scrappier quilt (NOTE: if you don't have a lot of variation in your temperatures you may want to use more fabrics to get more definition between days)

More things to think about...

- Colorways

Most of the Temperature Quilts you see use a solid rainbow scheme with cool colors representing lower temperatures and hot colors depicting higher temperatures.

Fabrics don't need to be in value gradations. You could use 20 unique fabrics that aren't related to each other for a random scrappy look.

Look at some of your favorite fabrics and photos and use colors from those fabrics.



Still more things to think about...BLOCKS

Is your temperature quilt block representing a day? A week? A month?

How long your "reporting unit" will be will affect the size of your quilt.

→ For 366 days, a grid of 18x21 is required.

18x21 - with 3" squares = 54"x63"

- with 4" squares = 72"x84"

- with 5' squares = 90'x105'

→ For 52 weeks, a grid of 6x9 or 7x8 is required

→ For months, a grid of 3x4 or 2x6 is required

>The amount of information you want to convey in your block will drive your block design. As you add more data to your block unit it becomes more complex since it has more moving parts. Thus a weekly reporting unit will be more complex than a daily reporting unit.

>You can also add more information besides high and low temperature. Some quilts record rain, snow, and sleet. Others track the weather vis-à-vis the avg daily temperature, e.g., flying geese point up or down depending on whether the daily temp is higher or lower than average. Again, more data is more moving parts.

Even more things to think about...FABRIC

- When using prints...
 - Prints that read as solids may be more effective if your pattern requires clear definition of units.
 - Large prints may not work if you are making small blocks. Make sure your fabric is identifiable in small pieces.
 - Multi color prints may be problematic depending on the pattern and how the fabric is cut. Each fabric set for a step should read as the same fabric.
 - Be careful using hombres; make sure the fabric reads consistently across steps.



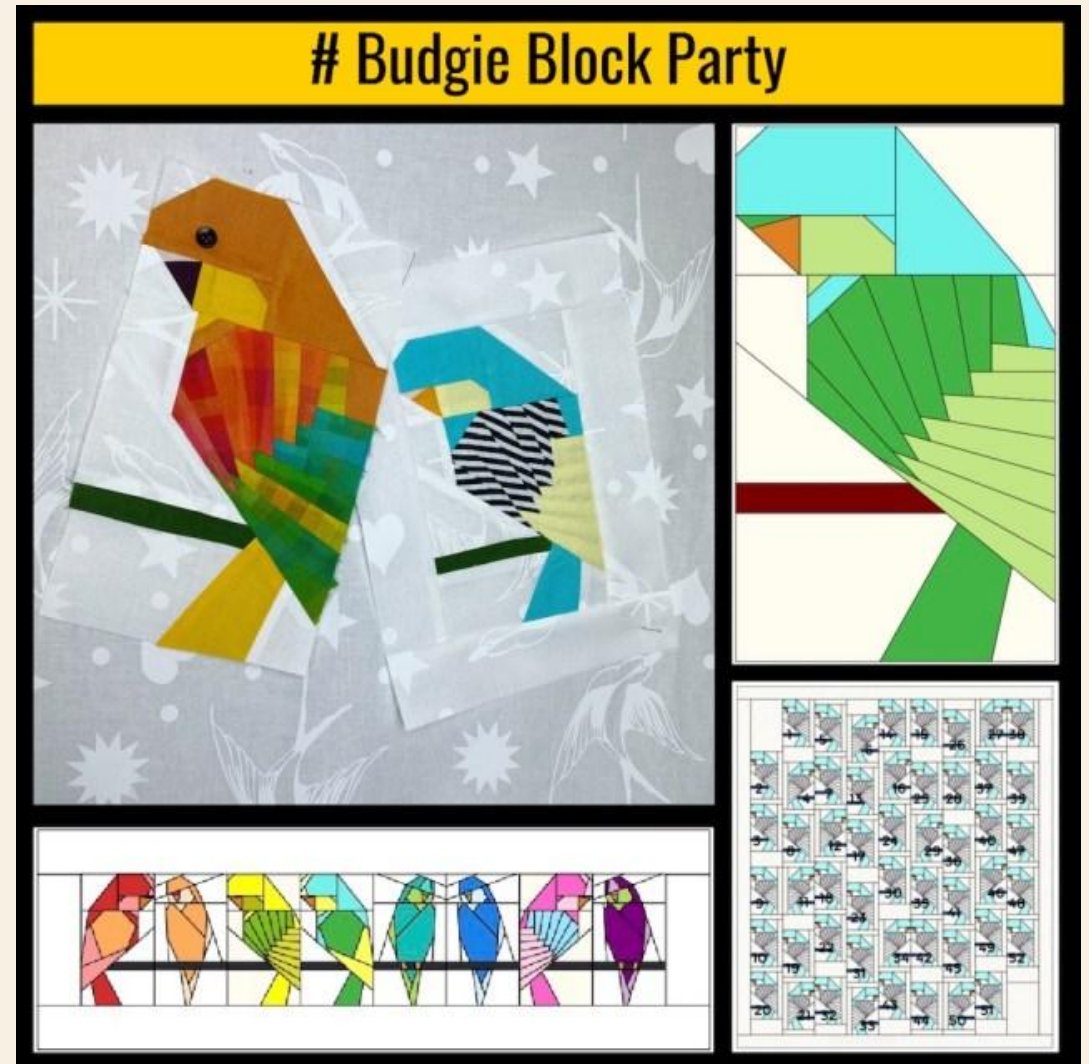
MORE INSPIRATION

Budgies as a Temperature Quilt

by [Bethanne Nemesh](#) Nov 25, 2023

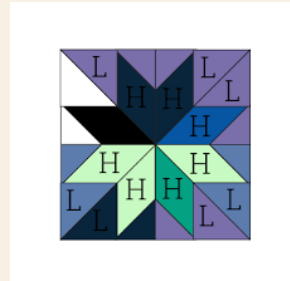
My (unfinished) Budgie temperature quilt sure has gotten a lot of attention! I have not made a set of directions per-se of how to do a temperature quilt. However, my pattern **Budgie Block Party** includes four bird patterns, in both left and right orientations, including the one budgie that has individual wing sections.

As you can see in the pieced wing, the top half of the wing is the high of the day, the lower half of the wing is the low of the day. The other areas of the bird also relate to the temperature. The head, lower breast and back of the bird is the average high for the week. The cheek, upper breast and the tail is the average low for the week. I opted to use a larger range of temperatures for the averages and use solids. The wings used a smaller range, but every two steps use the stripe or plaid of the same color...in a way...reading as one color. I think this keeps the birds from looking too chaotic.



Bethene Nemesh Budgie Temperature Quilt





The Official Quilters Select Group - 2026 Temp Quilt

TEMPERATURE QUILT RESOURCES

- <https://suepellanddesigns.com/> - quilt patterns with data collection sheets and color recommendations
- <https://fishringquilts.com/modern-temperature-quilts/> - article on modern temperature quilts
- <https://my.modafabrics.com/inspiration-resources/tempquiltintro> - moda information on temperature quilts including fabric suggestions
- <https://www.ncei.noaa.gov/access/past-weather/> - NOAA past weather data search engine

AMERICA 250! SAMPLER (THE OHIO VERSION)



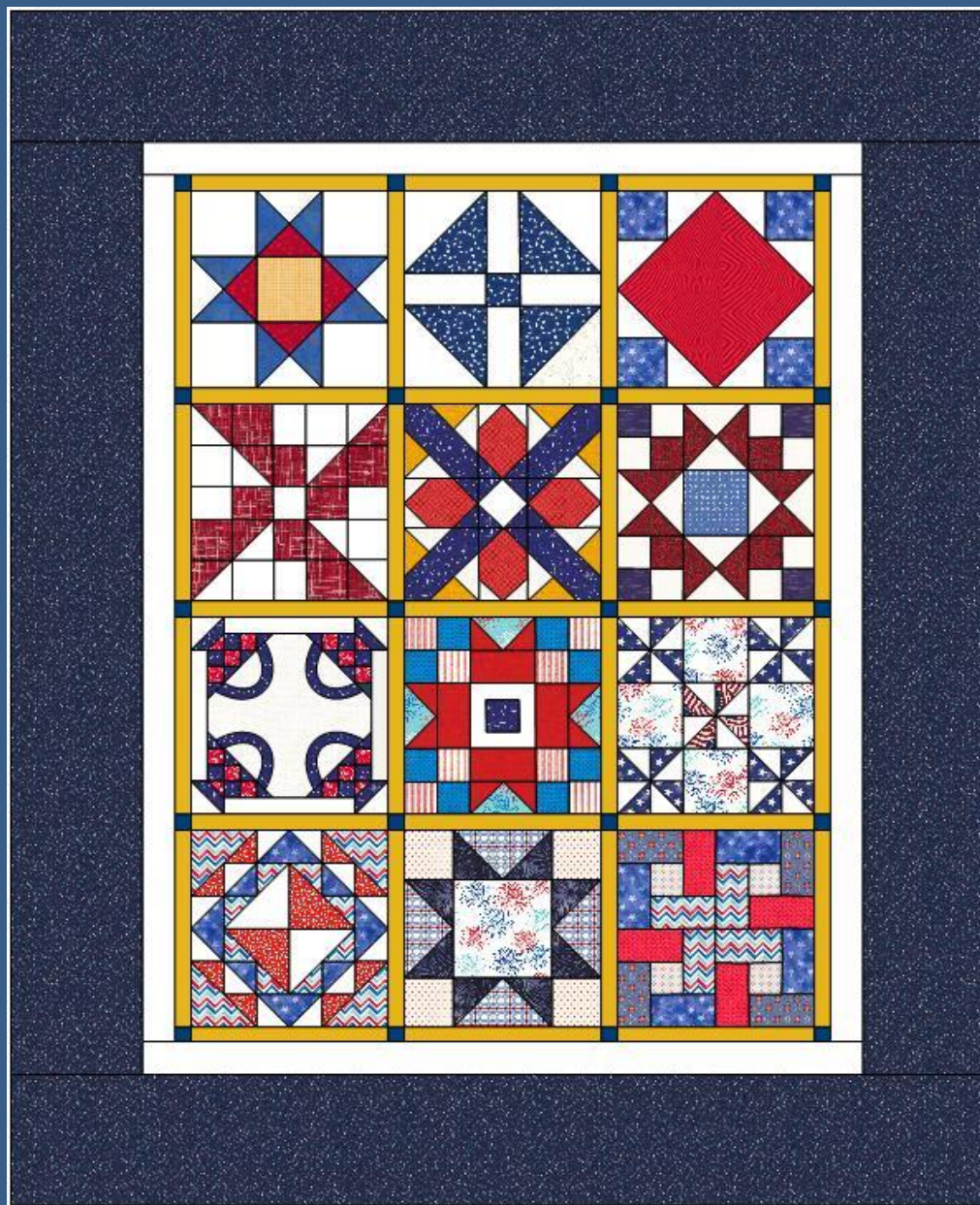
*Celebrating 250 Years
of American Independence*

AMERICA 250! SAMPLER (THE OHIO VERSION)

This will be a block of the month project following the thematic Ohio monthly celebration.

month	theme	block
JAN	Ohio Firsts	Ohio Star
FEB	Ohio Works	Monkey Wrench
MAR	Ohio Entertains	Arts Square
APR	Ohio Moves	Propeller
MAY	Ohio Creates	Flights of Fancy
JUN	Ohio Outdoors	Ohio Trails
JUL	Ohio Gathers	Baskets
AUG	Ohio Goes to the Fair	State Fair
SEP	Ohio Plays	Pinwheels
OCT	Ohio Grows	Corn and Beans
NOV	Ohio Serves	Sawtooth Star
DEC	Future Ohio	Bright Hopes

AMERICA 250! SAMPLER



CHARITY PROJECTS

Many kits are available on the tables in the back.

Please take kits and complete them as you are able. There are quilt kits for Flying Horse Farms as well as numerous baby quilts and items for 4th Trimester.



SHOW AND TELL

RAFFLE BASKET

CLOSING



WESTERVILLE QUILT GUILD

Next Meeting: Quilters' Movie Night

Tuesday, March 23, 7PM

@ST. Paul Lutheran, 4686 E. Walnut St., Westerville,
OH